

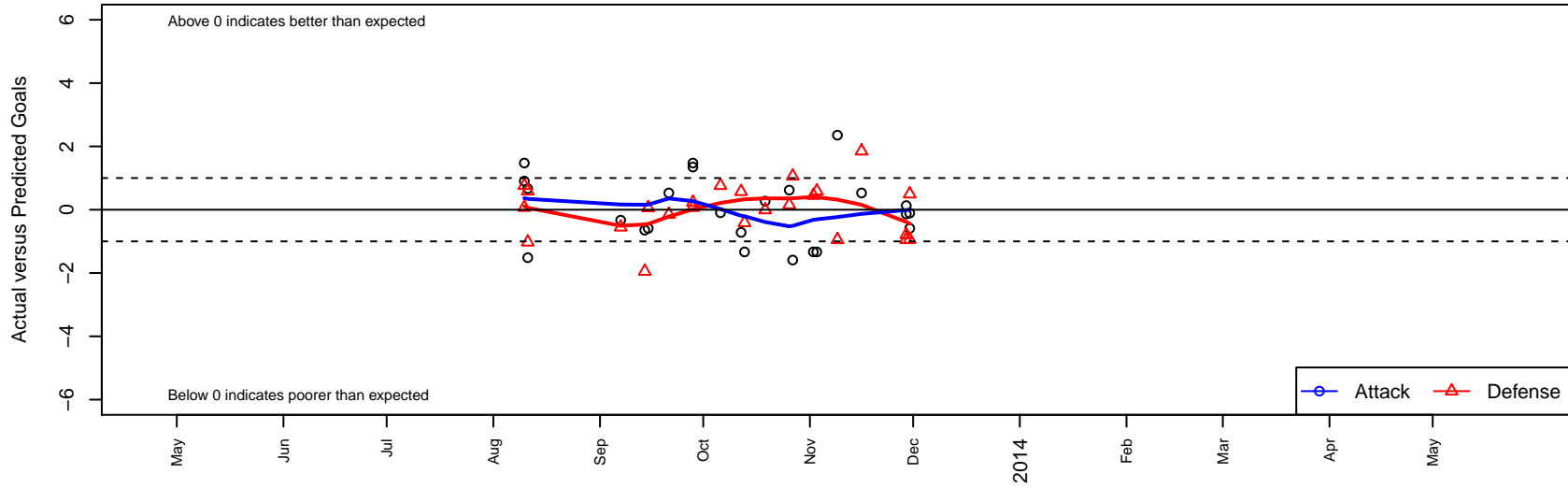
Exiles SC Black G02

, CAS
 G02 total strength=957
 attack=2.25 defense=1.32
 fall league = SCDL FI1 U11
 alt names used:
 Exiles SC G11 Black
 EXILES SC BLACK (CAS)
 EXILES SC EXILES BLACK (CAS)

Venues played:
 United Cup CAS Superliga U11
 SCDL FI1 U11
 SoCal DL Fall Showcase Flight 1 U11
 Surf Thanksgiving Gold U11



Exiles SC Black G02
 Dots are actual minus expected GF (blue circles) and GA (red triangles).
 Blue line is smoothed change in attack strength. Red is smoothed change in defense strength.



| | date | home | | away | | venue | pred.home | pred.away |
|------|-------------|--|---|-------------------------------|---|-------------------------------------|------------------|------------------|
| 2980 | 2013-11-30 | Del Mar Carmel Valley Sharks White G02 | 0 | Exiles SC Black G02 | 2 | Surf Thanksgiving Gold U11 | 0.49 | 2.11 |
| 2990 | 2013-11-30 | Exiles SC Black G02 | 1 | Arsenal FC West G02 | 2 | Surf Thanksgiving Gold U11 | 1.59 | 1.06 |
| 2938 | 2013-11-29 | Exiles SC Black G02 | 2 | West Coast FC G02 | 2 | Surf Thanksgiving Gold U11 | 1.87 | 1.05 |
| 2940 | 2013-11-29 | So Cal Athletic Holley G02 | 2 | Exiles SC Black G02 | 2 | Surf Thanksgiving Gold U11 | 1.21 | 2.14 |
| 2836 | 2013-11-16 | Exiles SC Black G02 | 1 | Arsenal FC Brown G02 | 1 | SCDL F11 U11 | 0.47 | 2.85 |
| 2729 | 2013-11-09 | Exiles SC Black G02 | 5 | Real So Cal White G02 | 2 | SCDL F11 U11 | 2.64 | 1.05 |
| 2643 | 2013-11-03 | FRAM Soccer Club G02 | 0 | Exiles SC Black G02 | 1 | SCDL F11 U11 | 0.59 | 2.33 |
| 2600 | 2013-11-02 | FC Golden State F11 G02 | 0 | Exiles SC Black G02 | 3 | SCDL F11 U11 | 0.45 | 4.33 |
| 2496 | 2013-10-27 | Arsenal FC West G02 | 0 | Exiles SC Black G02 | 0 | SCDL F11 U11 | 1.06 | 1.59 |
| 2454 | 2013-10-26 | Exiles SC Black G02 | 1 | Legends FC G02 | 2 | SCDL F11 U11 | 0.38 | 2.15 |
| 2319 | 2013-10-19 | Strikers FC F11 G02 | 2 | Exiles SC Black G02 | 1 | SCDL F11 U11 | 2.00 | 0.73 |
| 2204 | 2013-10-13 | Exiles SC Black G02 | 1 | FRAM Soccer Club G02 | 1 | SCDL F11 U11 | 2.33 | 0.59 |
| 2162 | 2013-10-12 | Exiles SC Black G02 | 2 | LA Galaxy South Bay Gold G02 | 0 | SCDL F11 U11 | 2.72 | 0.57 |
| 2049 | 2013-10-06 | Beach FC G02 | 0 | Exiles SC Black G02 | 2 | SCDL F11 U11 | 0.76 | 2.10 |
| 1801 | 2013-09-28 | Exiles SC Black G02 | 4 | Pateadores Irvine White G02 | 1 | SoCal DL Fall Showcase Flight 1 U11 | 2.53 | 1.07 |
| 1808 | 2013-09-28 | Exiles SC Black G02 | 2 | Slammers FC A G02 | 2 | SoCal DL Fall Showcase Flight 1 U11 | 0.65 | 2.23 |
| 1646 | 2013-09-21 | Arsenal FC Brown G02 | 3 | Exiles SC Black G02 | 1 | SCDL F11 U11 | 2.85 | 0.47 |
| 1533 | 2013-09-15 | Exiles SC Black G02 | 1 | Arsenal FC West G02 | 1 | SCDL F11 U11 | 1.59 | 1.06 |
| 1482 | 2013-09-14 | Real So Cal White G02 | 3 | Exiles SC Black G02 | 2 | SCDL F11 U11 | 1.05 | 2.64 |
| 1315 | 2013-09-07 | Exiles SC Black G02 | 4 | FC Golden State F11 G02 | 1 | SCDL F11 U11 | 4.33 | 0.45 |
| 854 | 2013-08-11 | FRAM Soccer Club G02 | 0 | Exiles SC Black G02 | 3 | United Cup CAS Superliga U11 | 0.59 | 2.33 |
| 858 | 2013-08-11 | Exiles SC Black G02 | 0 | Laguna Hills Eclipse Blue G02 | 2 | United Cup CAS Superliga U11 | 1.52 | 0.98 |
| 819 | 2013-08-10 | Beach FC G02 | 0 | Exiles SC Black G02 | 3 | United Cup CAS Superliga U11 | 0.76 | 2.10 |
| 821 | 2013-08-10 | Pateadores Irvine White G02 | 1 | Exiles SC Black G02 | 4 | United Cup CAS Superliga U11 | 1.07 | 2.53 |